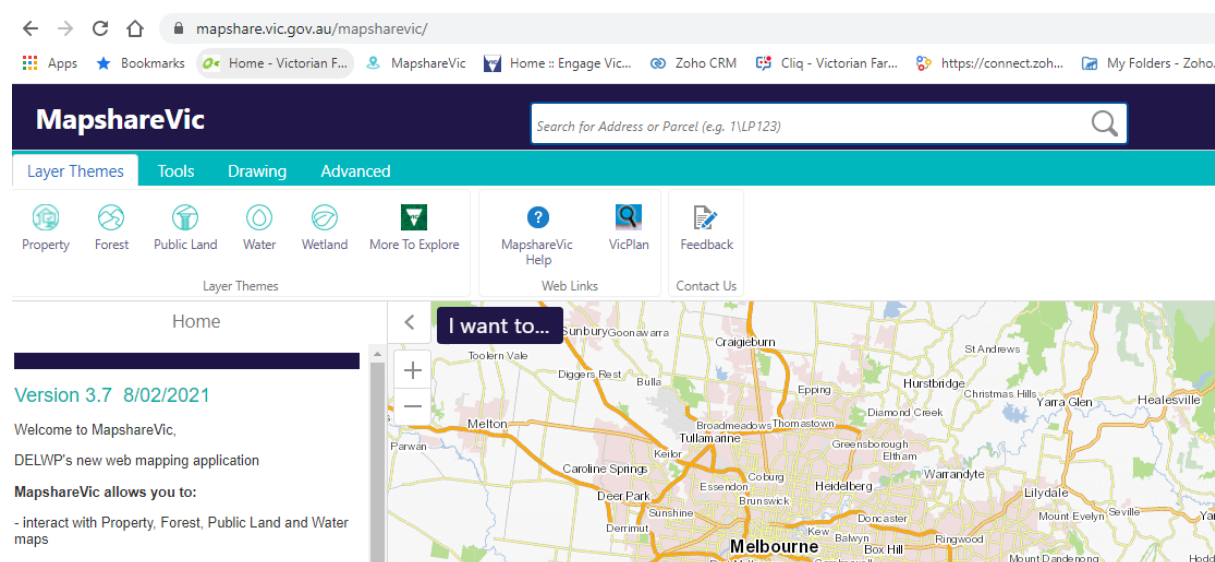


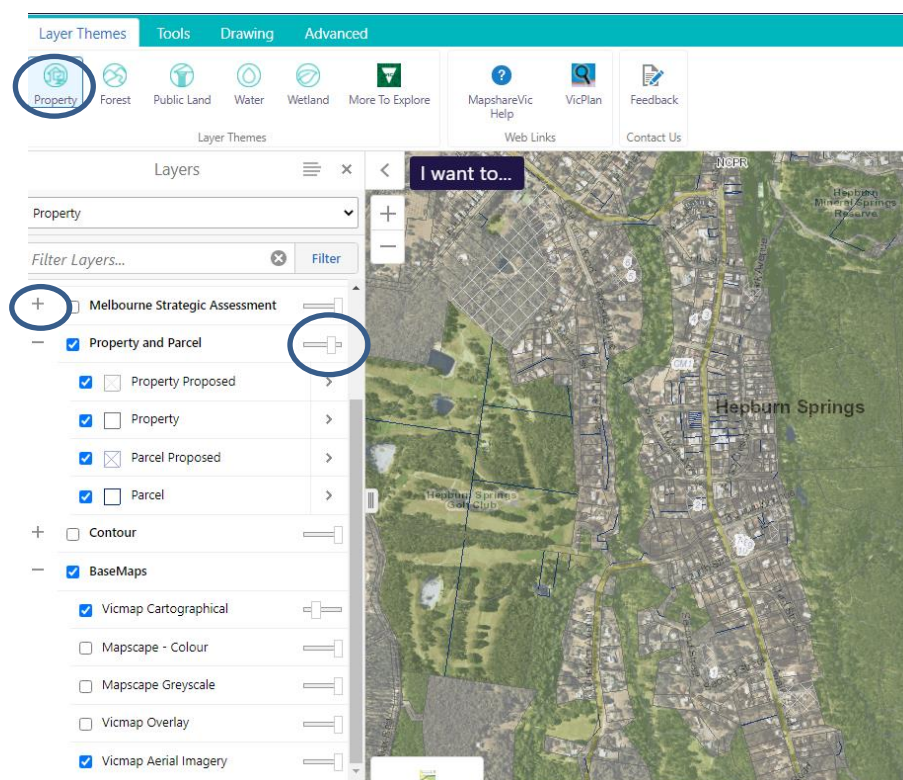
## How to use Mapshare for assessments

Mapshare is the Governments mapping program. It can give you basic information about licenses, it allows you to measure distances and areas and you can turn on layers like aerial photography and contours.

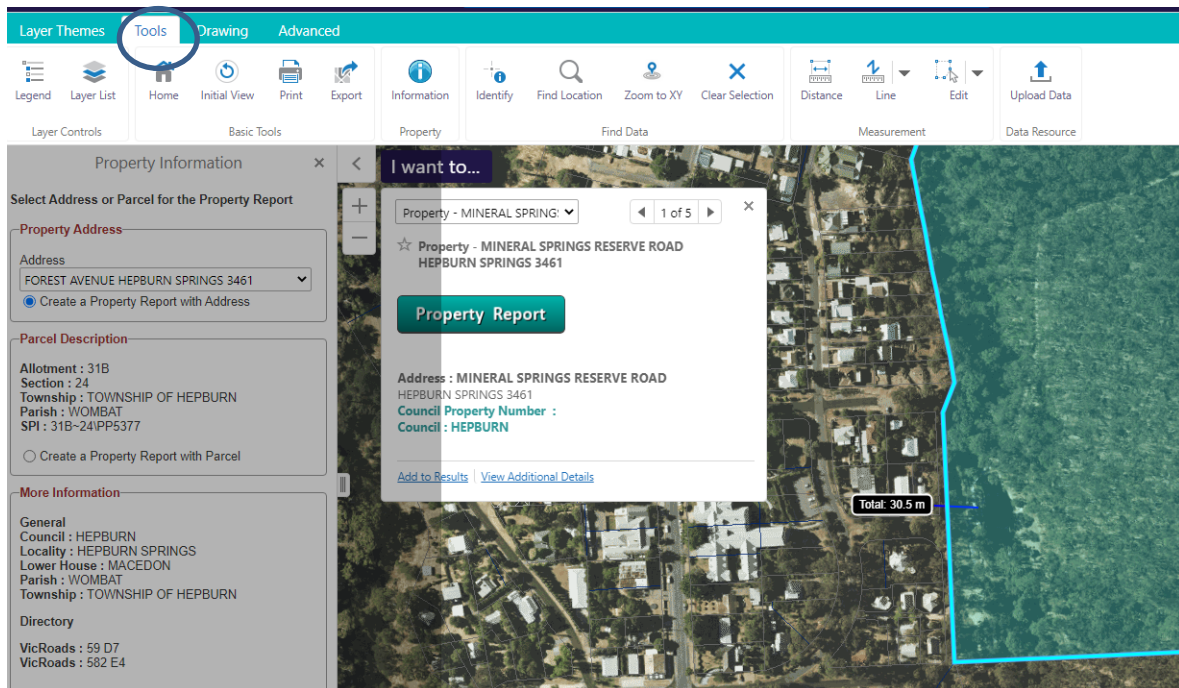
<https://mapshare.vic.gov.au/mapsharevic/> and click agree. You can search for an address or town or you can drag and zoom on the map.



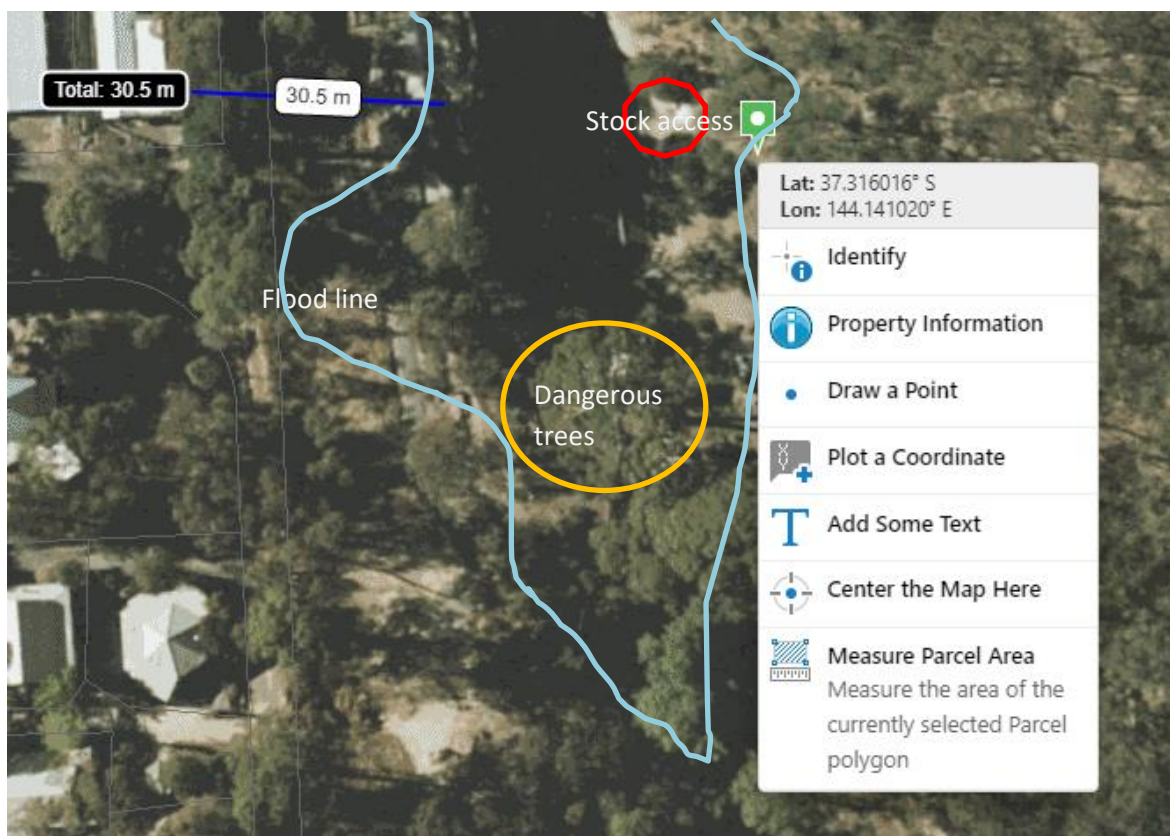
Click on **Property** under layer themes. Click on the + beside base maps and tick Vicmap Aerial imagery. You can use the slider bar to – for example on VicMap cartographic to give greater prominence to a layer.



The **tools** menu allows you to measure distances or find out information on a site. Distance allows you to measure – for example this waterbody is 30.5m away from a dwelling. The **i** for information brings up property information and a planning property report.



A **right mouse click** on the page brings up a menu. You can use snipping tool / screen shot to save the image. You can then annotate in a package like word. (Insert shapes and text boxes) Or you can print and mark with pens.

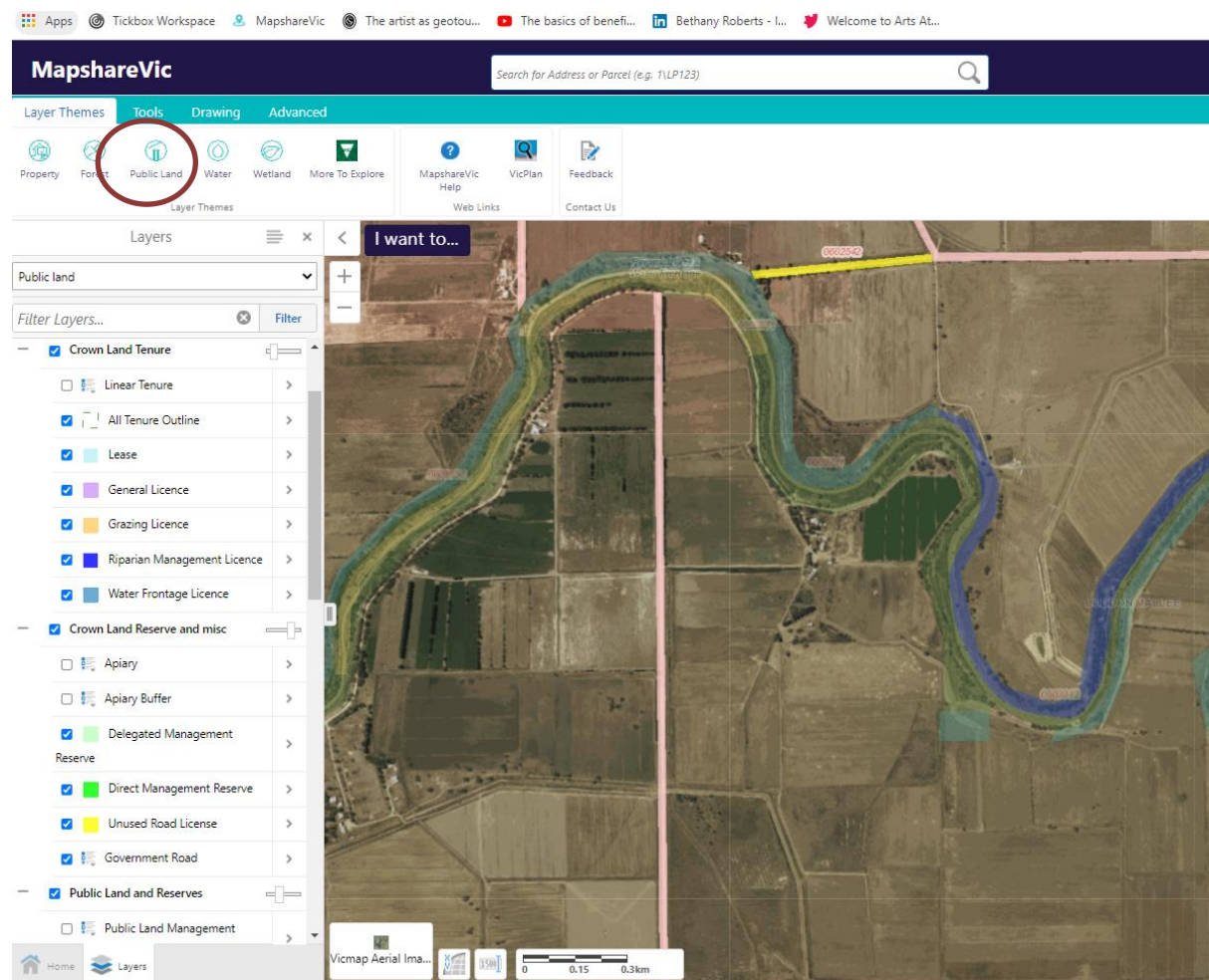




## How to find what kind of licence something is?

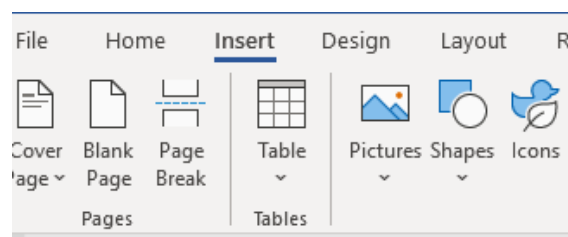
In Mapshare select the “public land tab”. The colours tell you a status. The red number is the reference. This will help you contact the public land management team to ask for more details.

Crown Land Tenure and Crown Land Reserve is turned on below. From the colours there is an unused road – important if unfenced (yellow), a grazing license (orange along river), water frontage licence (light blue) and riparian licence (dark blue).



## How to annotate in word.

Choose the insert menu then shapes. This will bring up a range of options, including text. You can turn off 'fill' of shapes so you can see through them. When you click on a shape the dots allow you to make smaller or larger and a four way arrow allows you to reposition (drag and drop). You can copy and paste shapes.



An Example of how to reference photos or issues on a plan.



1 Unfenced road with track. Evidence of falling rocks.

2 Steep river banks. Fallen trees and vegetation that increases risk of access.

3 Vegetated area with evidence of falling trees and branches.

4 Steep cliff access. Waterway has vegetation. Hard to tell depth.



1



2



3



4